

TM 250 Series

4.5-18 m telescopic aluminium mast kit, motorised
Tactical Masts: Telescopic Motorised



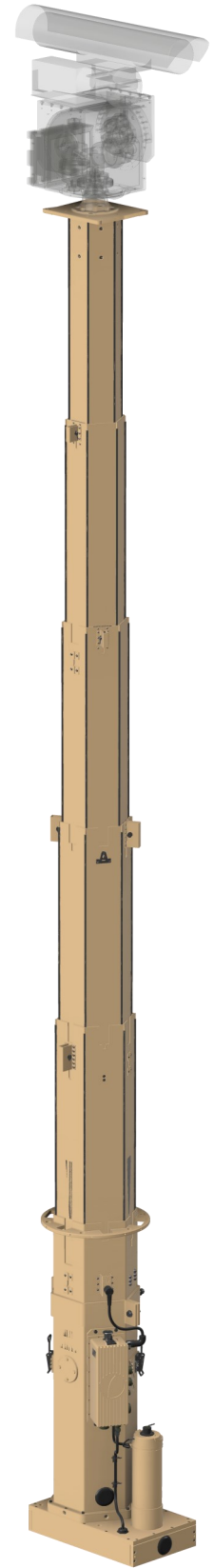
Overview

- Aluminium telescopic masts for vehicle, shelter or trailer integration
- Rigid platform for payloads such as EO/IR systems, cameras, sensors and antennas
- Hexagonal mast sections all nest within the 250 mm bottom section
- Compact footprint minimises space claim required for integration
- Configurable design for deployed and retracted heights as well as payload weight and pointing accuracy
- Superior performance for on-the-pause applications
- Fast motorised deployment with low power consumption
- Fully deployed heights up to 18 metres*
- Capable of supporting payloads up to 350 kg*
- Cable management options for routing payload cables outside the mast
- Customisable top interface for payload integration
- Fully compatible with Comrod Automated Payload Alignment System (CAPAS) rotators and tilters. Common communication protocol allowing fully automated payload deployment and positioning
- Qualified to MIL STD 810-G, MIL STD 461-E, MIL STD 1275-E

* Actual values will be subject to a combination of top load weight, top load area and pointing accuracy required.

Mast	Deployed Height	Retracted Height	Typical Payload / Wind Surface Area *	No. of Sections
TM250-4.5/1.15	4.5 m	1.15 m	115 kg / 0.3 m ²	6
TM250-6.5/1.6	6.5 m	1.6 m	350 kg / 1.5 m ²	6
TM250-10/2.3	10 m	2.3 m	300 kg / 0.75 m ²	6
TM250-12/2.3	12 m	2.3 m	150 kg / 1.5 m ²	7
TM250-13.5/2.3	13.5 m	2.3 m	150 kg / 1.5 m ²	8
TM250-18/3	18 m	3 m	70 kg / 0.8 m ²	8

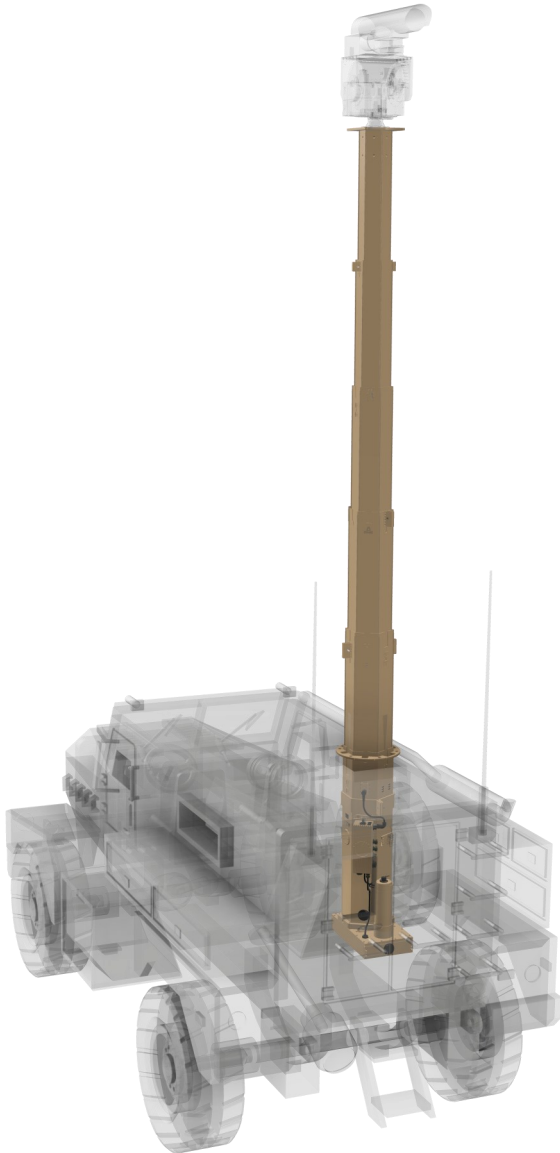
* Typical values shown. Actual values will be subject to a combination of payload weight, payload area and pointing accuracy required. Guying may be required for pointing accuracy. Please contact Eylex to discuss your specific requirement.



TM250-4.5/1.15 mast in deployed position



TM250-5.8/1.7 mast in retracted position



Vehicle / Platform Integration

November 2021

All specifications are subject to change without notice
The information contained herein is for reference only and does not constitute a warranty of performance

Partnered Supplier



sales@eylex.com.au
www.eylex.com.au

