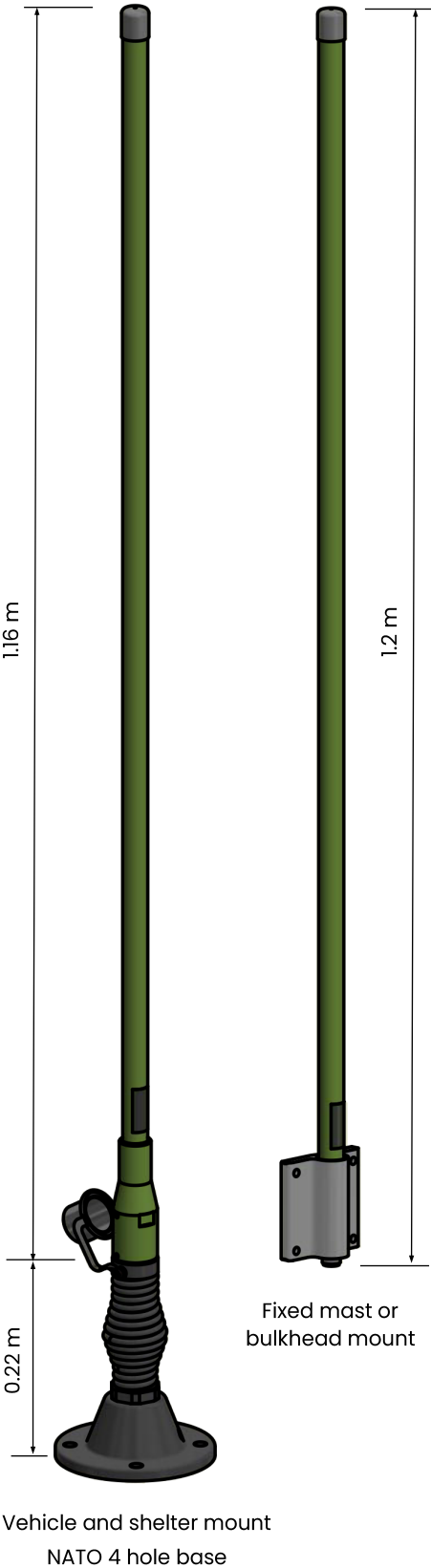


# VHF136174VM Series

VHF vehicle whip, built-in L1 GPS, dipole, 1.43 m, 136-174 MHz  
Tactical Antennas: Vehicle Mount



## Features

- VHF: 136-174 MHz  
L1 GPS: 1575.42 ± 10 MHz
- Dipole design, no ground plane required
- Passive L1 GPS element built into the whip
- Designed for operation on all tactical and civilian platforms
- Spring and rigid bases are available for vehicle, shelter, mast and pole mounting
- Available with Comrod VM and CEF type antenna to base connector
- Fixed pole or bulkhead mount option

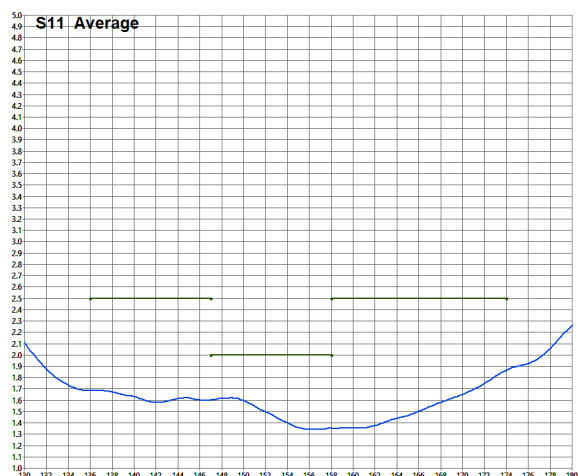
## Electrical Specifications

Frequency Range	136-174 MHz
VSWR	< 2:1 - 147-158 MHz < 2.5:1 - 136-174 MHz
Nominal Impedance	50 ohm
Power Rating	50 W CW
Gain	See diagram
Radiation Pattern	Azimuth: Omnidirectional Elevation: See overleaf
Polarisation	Vertical
Connector	BNC Female, others on request

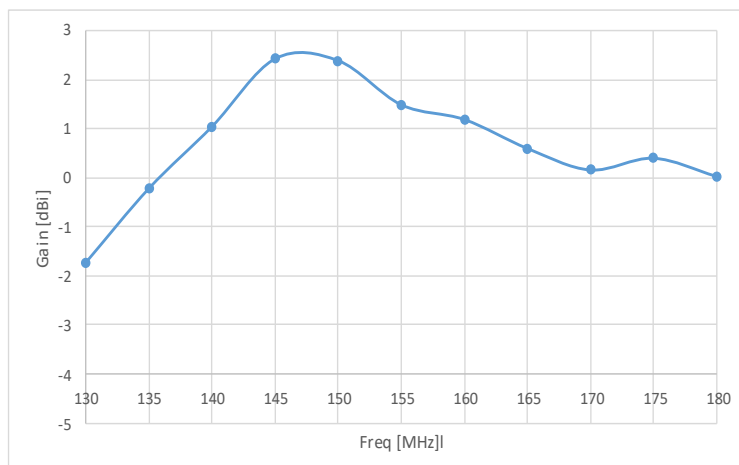
## Mechanical Specifications

Design	Centre fed dipole with built-in L1 GPS. Radiating elements completely enclosed in epoxy/fibreglass laminate. Metal parts are plated brass and stainless steel.	
Length (base type A)	Total:	1.34 m
	Whip:	1.16 m
	Base (option A):	0.22 m
Weight (base type A)	Whip	0.94 kg
	Complete	2.7 kg
Wind Rating	55 m/s = 201 kph	
Finish	Polyurethane lacquer	
Temperature Range	- 55°C to + 71°C	

## VSWR (typical)



## Gain (typical)



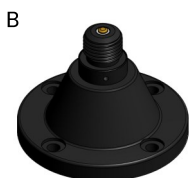
## Base Options

Below are a small selection of bases available for the VHF136174VM. Spring and rigid bases are available for vehicle, shelter, mast and pole mounting. Please contact Eylex to discuss your specific requirement.



**A**

NATO 4-hole Spring  
4 x M10 or 3/8" Bolts  
on 114 mm PCD  
Base diameter 140 mm  
Base height 215 mm



**B**

NATO 4-hole Rigid  
4 x M10 or 3/8" Bolts  
on 114 mm PCD  
Base diameter 140 mm  
Base height 100 mm



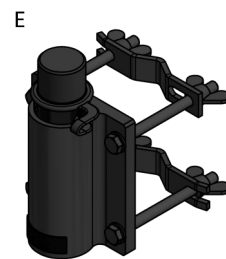
**C**

NATO  
50 mm Thread  
Base diameter 95 mm



**D**

Mast Mount Bracket  
24 mm Spigot  
40 mm Spigot  
50 mm Spigot  
40 mm Socket  
50 mm Socket  
Customer Specified

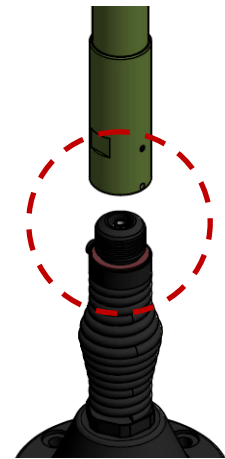
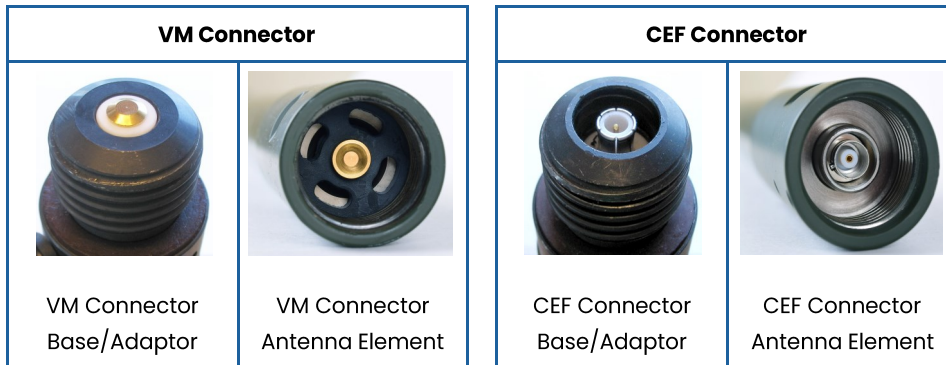


**E**

Mast Mount Bracket  
Tube clamp to suit poles  
up to Ø65 mm

## Antenna Element to Base Connector

The VHF136174VM can be supplied with either a Comrod VM or CEF type connection between the antenna element and base/mounting. The connection shares the same size mounting thread but has a different internal RF contact. Both of these connectors are proprietary to Comrod.

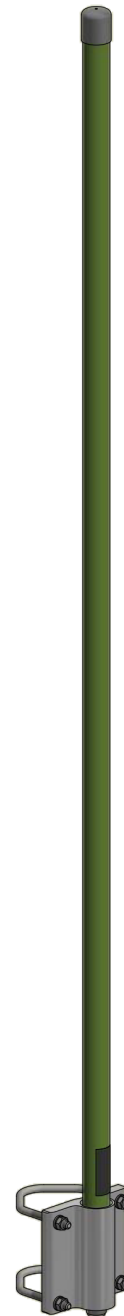
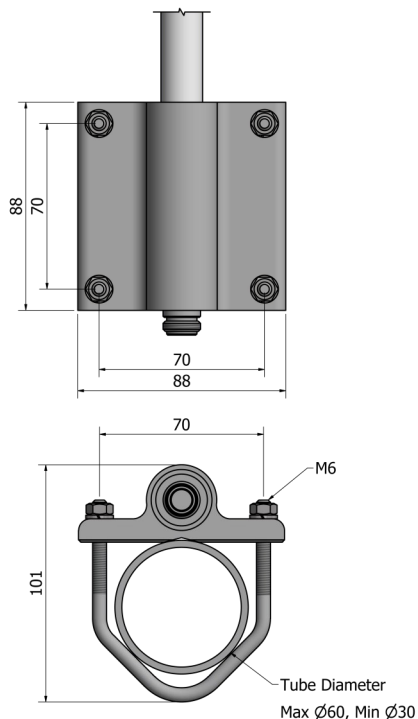


Antenna to base  
connection

## Antenna Variants

### VHF136174M

For permanent pole or bulkhead mounting. Supplied with N type female connector. See separate VHF136174M datasheet for details.



February 2021

---

All specifications are subject to change without notice  
The information contained herein is for reference only and does not constitute a warranty of performance

Partnered Supplier



[sales@eylex.com.au](mailto:sales@eylex.com.au)  
[www.eylex.com.au](http://www.eylex.com.au)

