

AT-T

Passive transformer for HF whip antennas, 2–30 MHz
Commercial and Marine Antennas



Application

- Passive transformer for use with Comrod side feed 7 to 10 m whips
- 4–30 MHz (can be used from 2 MHz with a reduction in gain)
- 50 Ω , N type female connector
- 150 W CW
- Broadband – no tuning
- Gain comparable to a commercial maritime tuner and whip
- Reduced cabling – no DC power required

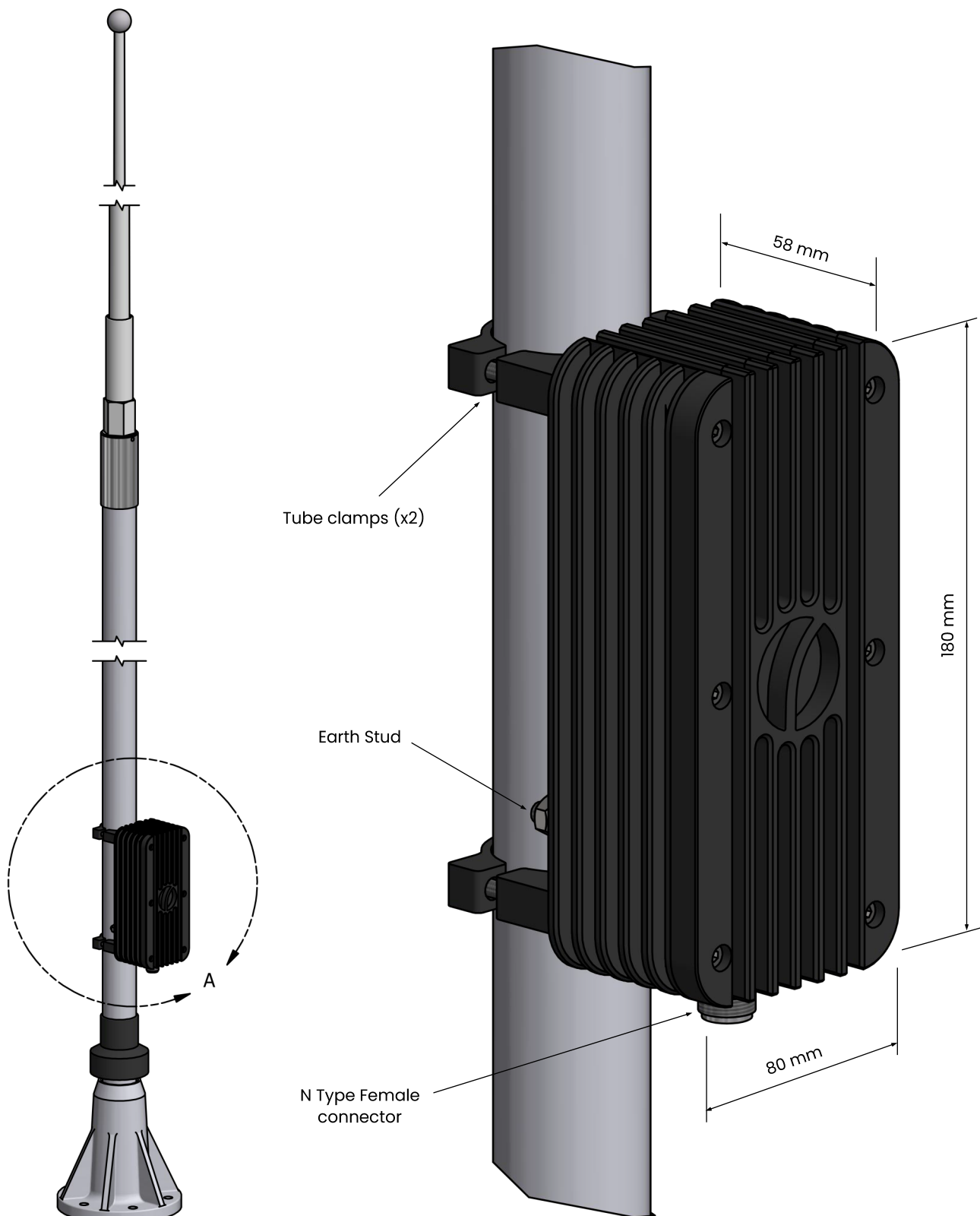


Electrical Specifications

Frequency Range	4–30 MHz (can be used from 2 MHz with reduced gain)
Nominal Impedance	50 Ω
Power Rating	150 W CW
Gain	Comparable to an active tuner
Connector	N type female
DC Grounded	Yes

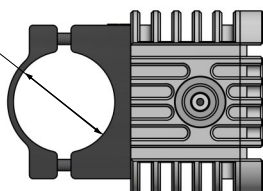
Mechanical Specifications

Design	Broadband passive transformer. Housing manufactured from aluminium.
Dimensions	180 x 80 x 58 mm (see page 2)
Weight	1.7 kg
Finish	Black
Temperature Range	– 55°C to +55°C
Water Proofing	IP67



Clamp sizes available to fit Comrod HF whips.

AT82 - Ø44.5 mm
AT100 - Ø66 mm



Mounting

The AT-T is mounted onto the antenna using built-in tube clamps compatible with either 8 or 10 metre modular series HF whips. Clamp sizes are available to suite AT82 and AT100. The AT-T is positioned to connect directly with the side feed of the antenna.

April 2020

All specifications are subject to change without notice
The information contained herein is for reference only and does not constitute a warranty of performance

Partnered Supplier



sales@eylex.com.au
www.eylex.com.au

