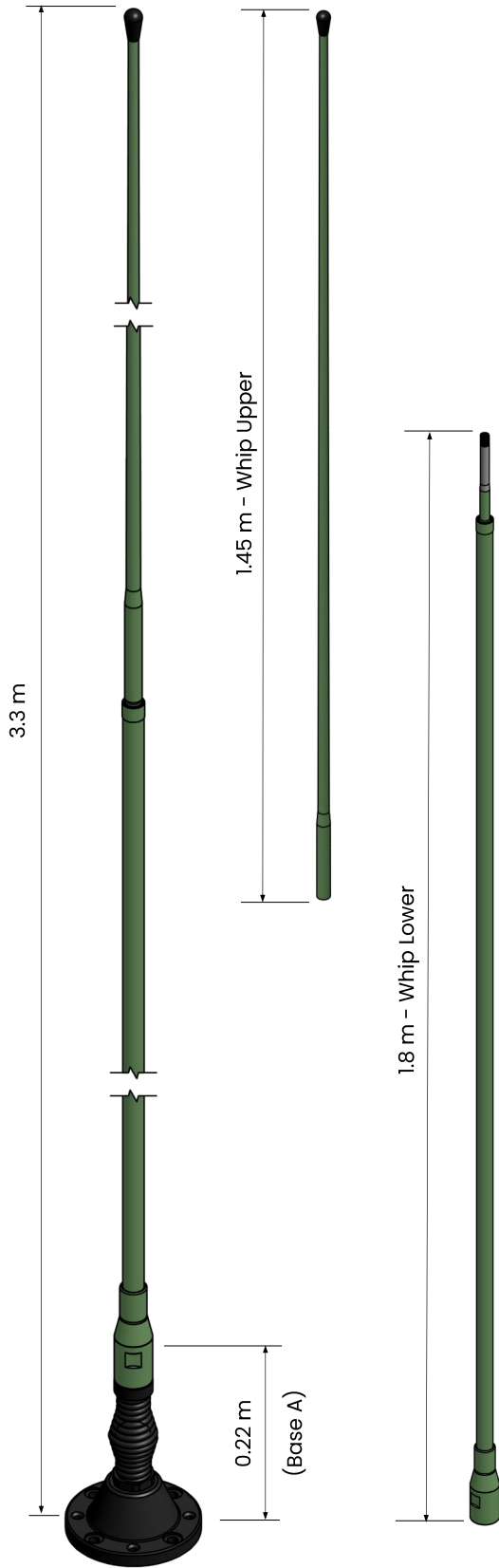


VHF3088VM

VHF sectional vehicle whip, dipole, 3.4 m, 30–88 MHz
Naval Antennas and Systems: Shipboard



Standard NATO 4 hole
 Vehicle Base (A)

Application

The VHF3088VM is a VHF vehicle antenna designed for use on all modern in-service military platforms, including armoured or soft skin, metal chassis or composite, wheeled or tracked.

The antenna is a dipole design so does not require a ground plane to operate.

Bases are available for vehicle, mast and fixed mounting with optional L1 and L1/L2 GPS.

Electrical Specifications (Antenna)

Frequency Range	30 – 88 MHz
VSWR	See diagram
Nominal Impedance	50 Ω
Power Rating	100 W
Gain	See diagram
Radiation Pattern	Azimuth: Omnidirectional Elevation: See overleaf
Polarisation	Vertical
Connector	BNC Female, others on request

Mechanical Specifications

Design	Centre fed dipole. Radiating elements completely enclosed in epoxy/fibreglass laminate. Metal parts are plated brass and stainless steel.
Length#	Total: 3.3 m Lower Whip: 1.8 m Upper Whip: 1.45 m Base (Option A): 0.22 m
Weight	Whips - 1.65 kg Complete - 3.4 kg*
Wind Rating	55 m/s = 201 km/h
Finish	Polyurethane lacquer.
Colour	Customer Specified
Installation	See base option table
Temperature Range	- 55°C to + 71°C

* Weight with standard NATO 4 hole vehicle base. Base options specified overleaf.

Nominal dimensions subject to manufacturing tolerances.

GPS Electrical Specifications

Configuration	L1 GPS	L1/L2 GPS
Frequency Band	1575.42 ± 10 MHz	L1 1575.42 ± 10 MHz L2 1227.60 ± 10 MHz
Supply Voltage	2.7-5.5 V	2.7-5.5 V
Pre-amplifier	26.5 dB @ 5 V	26.5 dB @ 5 V
Noise Figure	2.5 dB	2.5 dB
Supply Current	< 40 mA	< 60 mA
Polarisation	RHCP	RHCP
Connector	SMA female	SMA female

Antenna Base Options

Bases are available to suit most installations including vehicle, mast and shelter mounting. Many are available with optional L1 and L1/L2 GPS. All bases are supplied with a protective top cap. See below for mounting options:-



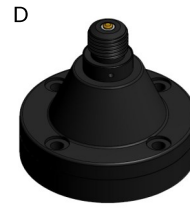
A
NATO 4-hole Spring
4 x M10 or 3/8" Bolts
on 114 mm PCD
Base diameter 140 mm
Base height 215 mm



B
NATO 4-hole Spring GPS
4 x M10 or 3/8" Bolts
on 114 mm PCD
Base diameter 140 mm
Base height 240 mm



C
NATO 4-hole Rigid
4 x M10 or 3/8" Bolts
on 114 mm PCD
Base diameter 140 mm
Base height 100 mm



D
NATO 4-hole Rigid GPS
4 x M10 or 3/8" Bolts
on 114 mm PCD
Base diameter 140 mm
Base height 125 mm



Bases A, B, C and D are also available with optional NATO 6-hole pattern
6 x M6 or 1/4" Bolts
on 111 mm PCD



E
NATO 50mm Thread with Spring
Base diameter 74 mm
Base height 188 mm



F
NATO 50mm Thread GPS with Spring
Base diameter 95 mm
Base height 230 mm



G
NATO 50mm Thread Rigid
Base diameter 74 mm
Base height 60 mm



H
General Purpose Bulkhead Adaptor
Mounting hole diameter 22 mm



I
Mast Mount Bracket
40 mm Socket
50 mm Socket
Customer Specified

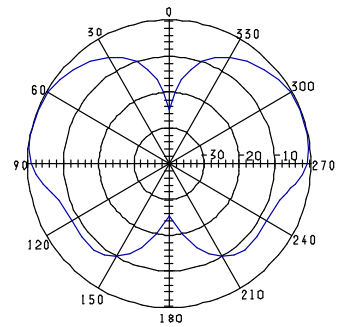
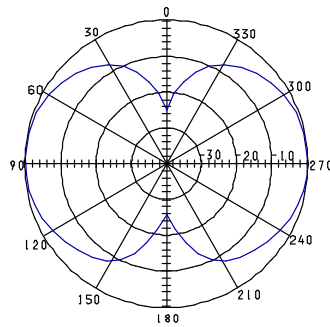
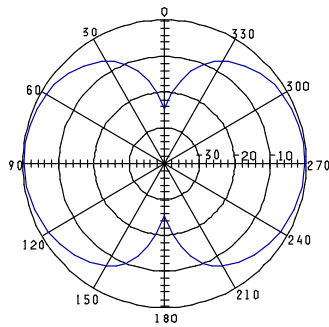


J
Mast Mount Bracket
24 mm Spigot
40 mm Spigot
50 mm Spigot
Customer Specified

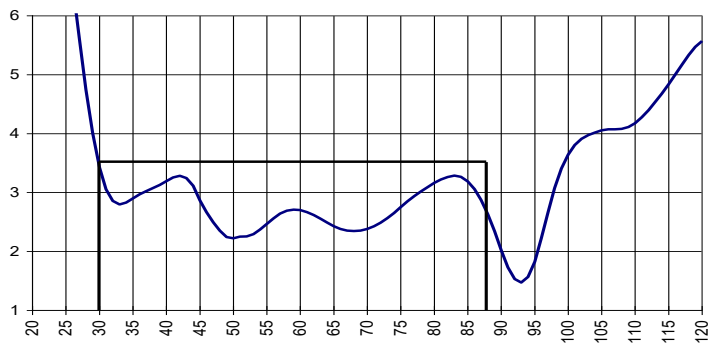
Antenna Options

Product	Description
Whip Bag	Protective carrying bag for upper and lower whip sections.
Tie Down Kit	Allows the whip to be tied down to the vehicle while in motion.

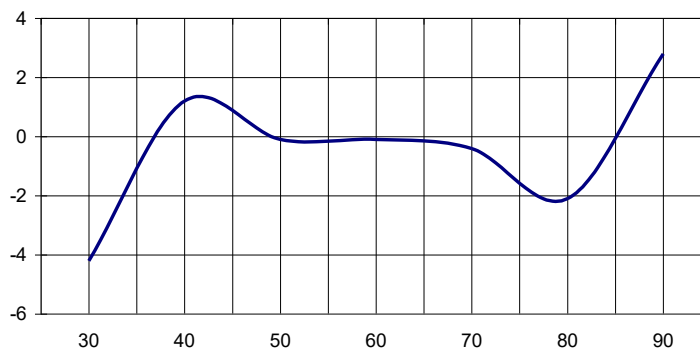
Radiation Diagram, Elevation



VSWR



GAIN, relative to a $\frac{1}{4}\lambda$ whip on GP



September 2018

All specifications are subject to change without notice
The information contained herein is for reference only and does not constitute a warranty of performance

Partnered Supplier



sales@eylex.com.au
www.eylex.com.au

