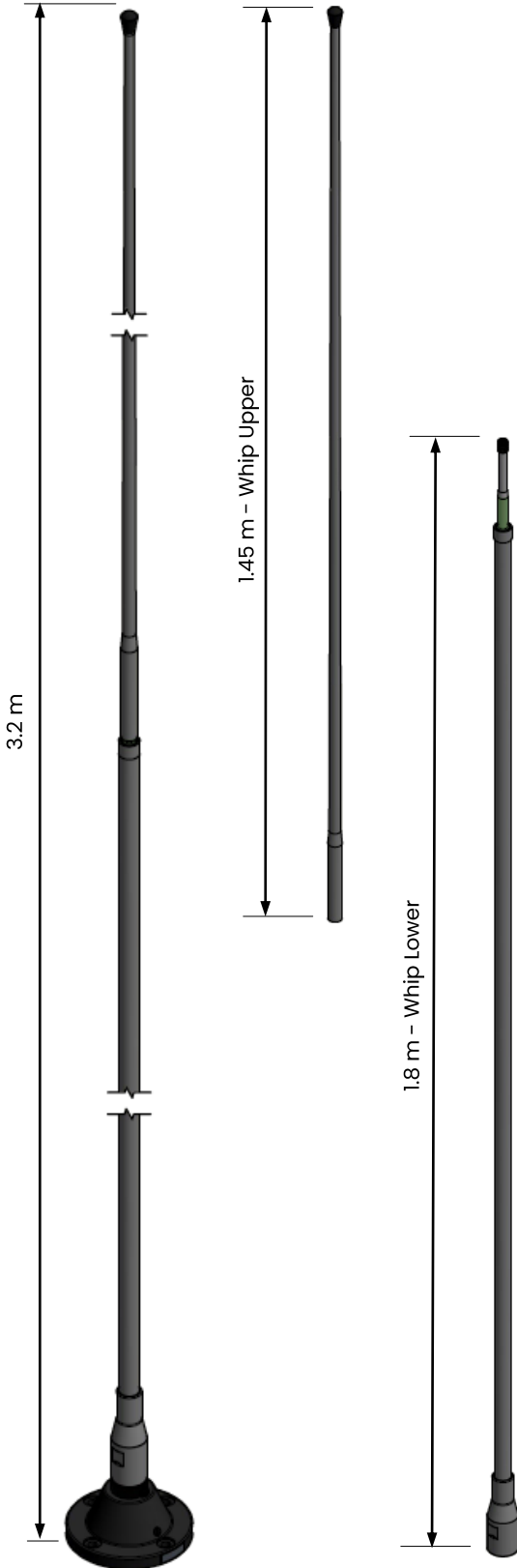


# VHF30108VM-Ship

VHF sectional vehicle whip, dipole, 3.4 m, 30-108 MHz

Naval Antennas and Systems: Shipboard



Standard NATO 4 hole base (C)

## Application

The VHF30108VM is a rigid mount dipole whip antenna which has been developed for shipboard applications.

The antenna is ground independent and operates over the full 30-108 MHz frequency band. VHF30108VM has been fully tested to meet the demands of equipment used in a shipboard military environment.

## Electrical Specifications

<b>Frequency Range</b>	30 - 108 MHz
<b>VSWR</b>	See diagram
<b>Nominal Impedance</b>	50 $\Omega$
<b>Power Rating</b>	100 W
<b>Gain</b>	See diagram
<b>Radiation Pattern</b>	Azimuth: Omnidirectional Elevation: See overleaf
<b>Polarisation</b>	Vertical
<b>Connector</b>	BNC Female, others on request

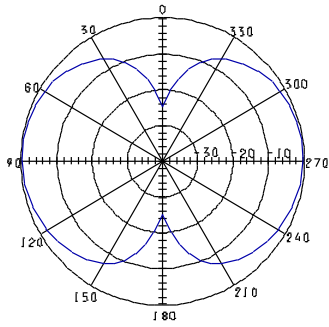
## Mechanical Specifications

<b>Design</b>	Centre fed dipole. Radiating elements completely enclosed in epoxy/fibreglass laminate. Metal parts are plated brass and stainless steel.
<b>Length*</b>	Total: 3.2 m Lower Whip: 1.8 m Upper Whip: 1.45 m
<b>Weight</b>	Whips - 1.65 kg Complete - 2.65 kg*
<b>Wind Rating</b>	55 m/s
<b>Finish</b>	Polyurethane lacquer
<b>Colour</b>	Customer Specified
<b>Installation</b>	See base option table
<b>Temperature Range</b>	- 55°C to + 71°C

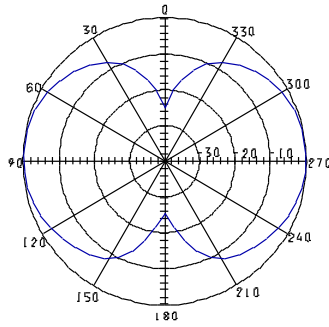
\* Weight with standard NATO 4 hole rigid base. Base options specified overleaf.

# Nominal dimensions subject to manufacturing tolerances.

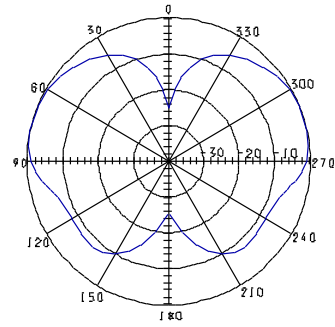
## Radiation Diagram, Elevation



30 MHz

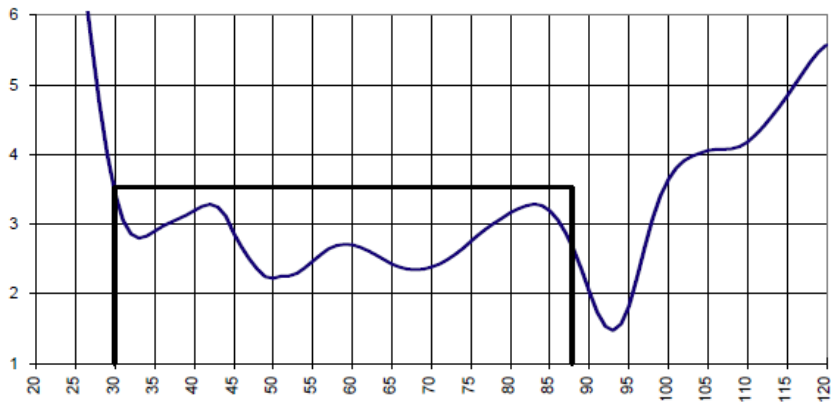


60 MHz

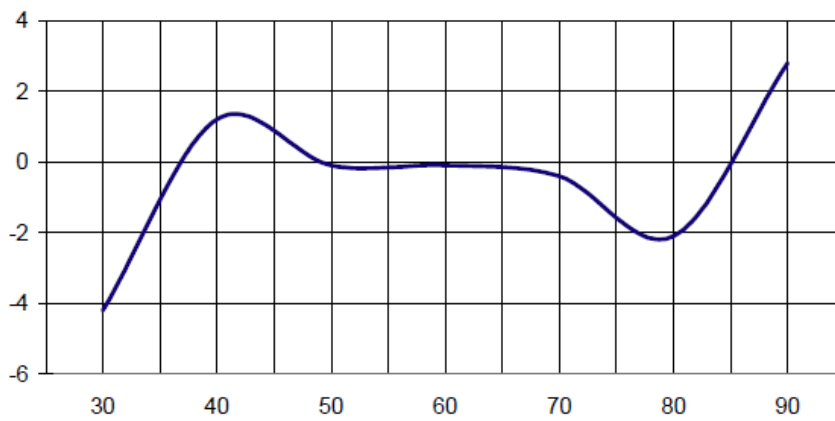


88 MHz

## VSWR



## Gain, Relative $\frac{1}{4} \lambda$ whip on GP



## Antenna Base Options

Bases are available to suit most installations including vehicle, mast and shelter mounting. Many are available with optional L1 and L1/L2 GPS. All bases are supplied with a protective top cap. See below for mounting options:-

A



NATO 4-hole Spring  
4 x M10 or 3/8" Bolts  
on 114 mm PCD  
Base diameter 140 mm  
Base height 215 mm

B



NATO 4-hole Spring GPS  
4 x M10 or 3/8" Bolts  
on 114 mm PCD  
Base diameter 140 mm  
Base height 240 mm

C



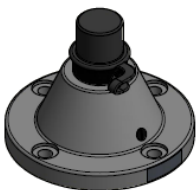
NATO 4-hole Rigid  
4 x M10 or 3/8" Bolts  
on 114 mm PCD  
Base diameter 140 mm  
Base height 100 mm

D



NATO 4-hole Rigid GPS  
4 x M10 or 3/8" Bolts  
on 114 mm PCD  
Base diameter 140 mm  
Base height 125 mm

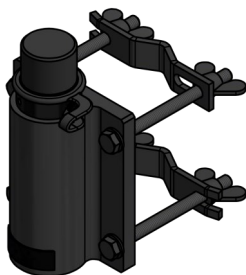
Bases A,B,C and D are also available with optional NATO 6-hole pattern 6 x M6 or 1/4" Bolts on 111 mm PCD



Bases can be supplied painted to match the antenna element colour as an option.

## Mast or Pole Mounting Options

E

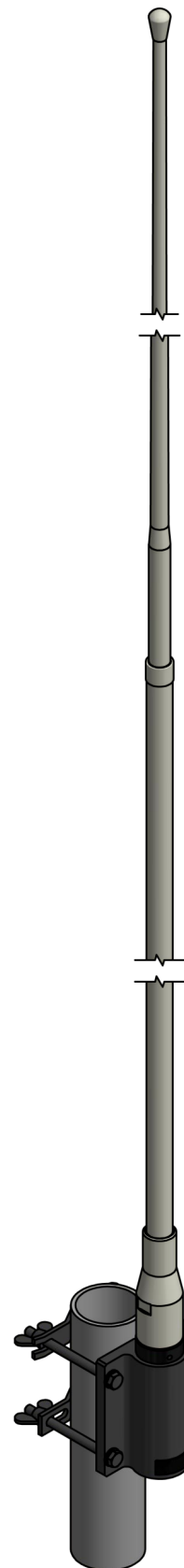


Mast Mount Bracket  
Tube clamp to suit poles  
up to Ø 65 mm

F



Tube Clamp Adaptor  
Clamp area diameter 38 mm  
Clamp area length 80 mm  
N-type female bottom  
connector



VHF30108VM shown in grey, pole mounted using mast mount bracket K

September 2018

---

All specifications are subject to change without notice  
The information contained herein is for reference only and does not constitute a warranty of performance

Partnered Supplier



[sales@eylex.com.au](mailto:sales@eylex.com.au)  
[www.eylex.com.au](http://www.eylex.com.au)

