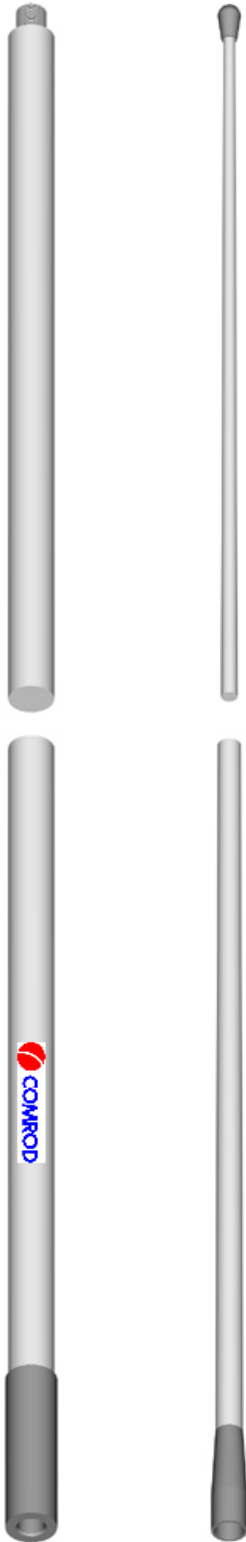


AV90 Series

VHF, 9 dB, two piece sectional whip, monopole, end feed, 4.9 m, 156-162 MHz

Commercial and Marine Antennas



AV90BI version shown

See page 2 for mounting options

Application

The AV90 antenna series are high gain antennas designed for the maritime VHF radio telephone service. They are high quality antennas with a durable construction and a beautiful finish for installation on all kinds of vessels.

Choose between base sections: for required mounting AV90BI16-2, AV90DI16-2 or AV90MI16-2 together with the top whip section AV60-BI.

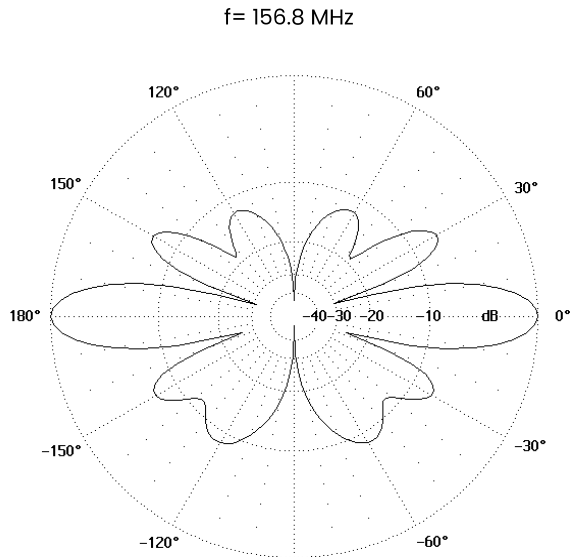
Electrical Specifications

Type	AV90BI16-2	AV90DI16-2	AV90MI16-2
Frequency Range	156-159 MHz, VSWR < 1.5 : 1 159-162 MHz, VSWR < 2.5 : 1		
Nominal Impedance	50 Ω		
Power Rating	100 W		
Gain	9 dB Base section 3 dB Top whip section 6 dB		
Pattern	Horizontal plane: Omnidirectional Vertical plane: See reverse side		
Polarisation	Vertical		
Connector	BNC female	UHF female	UHF female
DC Grounded	Yes		

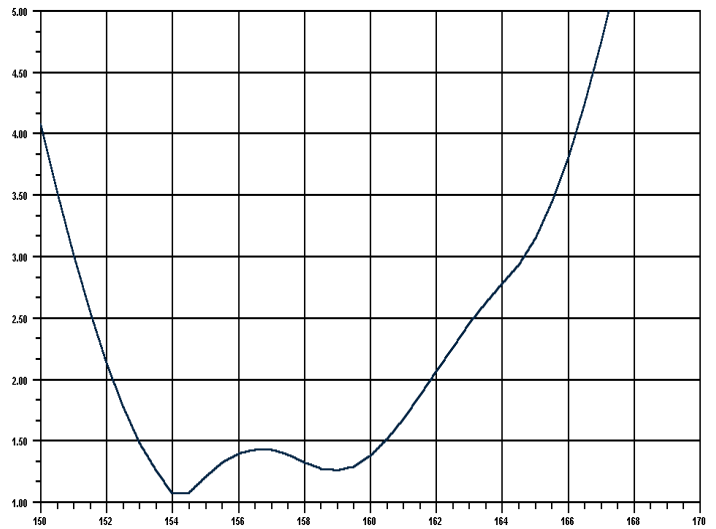
Mechanical Specifications

Design	The top section is an AV60BI antenna using two 5/8 elements, and the base section is a stacked co-linear array. Radiating elements completely enclosed in polyurethane foam within a fibreglass tube.
Height	4.73 m nominal
Weight	3.5 + 1.1 = 4.6 kg
Wind Rating	55 m/s = 201 kph
Finish	Polyurethane lacquer, white
Temperature Range	- 55°C to + 71°C

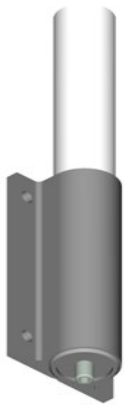
Vertical Radiation Diagram



Standing Wave Ratio



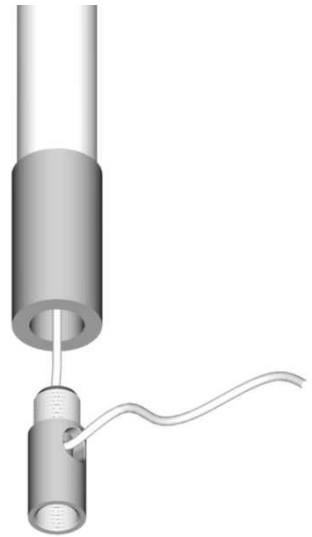
Mounting Options



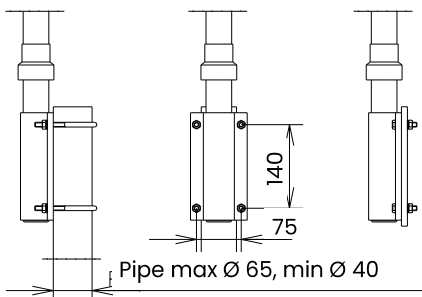
AV90M
(UHF Connector)



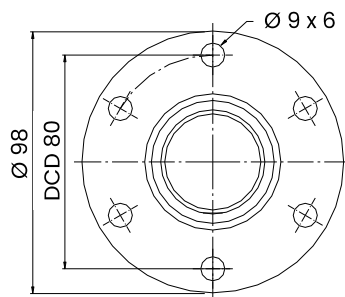
AV90D
(UHF Connector)



AV90BI
Integrated BNC Connector



Stainless steel M10 U-bolts are included as standard. M10 bolts for bulkhead mounting are not included.



Deck mount hole pattern

Mounting

To be mounted on a superstructure with UNS 1x14 base and support approximately 1.5' above the deck. Stand off support and base are not included.

To enable cable feed at the bottom of the antenna, an AV-C adaptor (included) can be used.

See diagram above for detail.

February 2021

All specifications are subject to change without notice
The information contained herein is for reference only and does not constitute a warranty of performance

Partnered Supplier



sales@eylex.com.au
www.eylex.com.au

