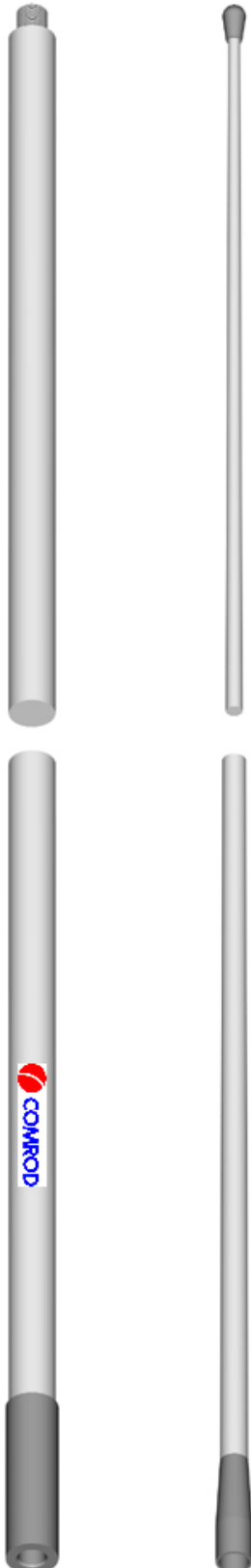


AV100 Series

VHF, 10 dB, two piece sectional whip, monopole, end feed,
7 m, 156-162 MHz

Commercial and Marine Antennas



Application

The AV100 series antenna is a high gain antenna designed for the maritime VHF radio telephone service. It is a high quality antenna with a durable construction and a beautiful finish for installation on all kinds of vessels.

It consists of a base (AV100/2-B) and a top (AV100/2-T) section.

Mounting options are available, see page 2.

Electrical Specifications

Type	AV100BI23-2	AV100D23-2	AV100M23-2
Frequency Range	156 – 162 MHz VSWR < 1.5 @ 158.6 MHz		
Nominal Impedance	50 Ω		
Power Rating	100 W		
Gain	10 dB		
Pattern	Horizontal plane: Omnidirectional Vertical plane: See diagram		
Polarisation	Vertical		
Connector	BI female	UHF female	UHF female
DC Grounded	Yes		

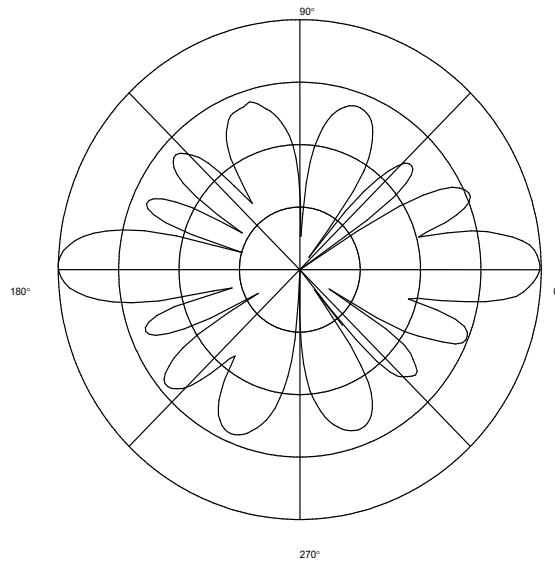
Mechanical Specifications

Design	Phased $1/2 \lambda$ elements in a collinear array with a coaxial choking sleeve to suppress cable radiation. Radiating elements completely enclosed in polyurethane foam within a fibreglass tube.
Height	7 m
Weight	3.8 + 1.2 = 5 kg
Wind Rating	55 m/s = 201 km/h
Sections	Base: 3.5 m Top: 3.5 m
Finish	Polyurethane lacquer, white
Temperature Range	- 55°C to + 71°C

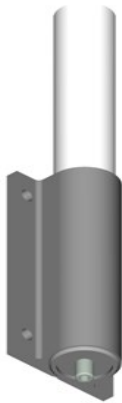
Suitable cable: RG58, RG213 or similar.

Vertical Radiation Diagram

(frequency = 156.8 MHz)



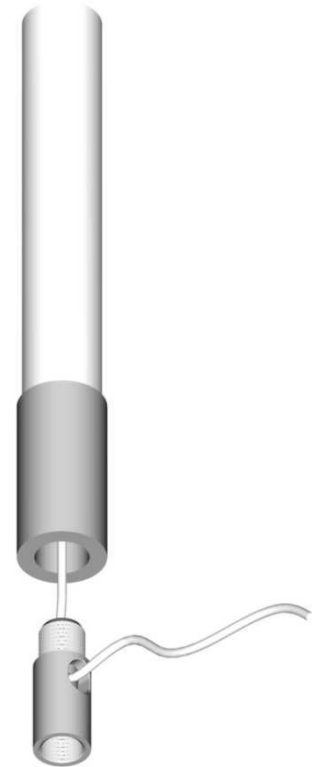
Mounting Options



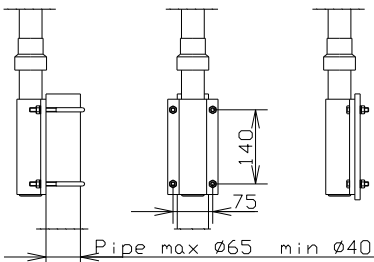
AV100M23-2
UHF-Connector



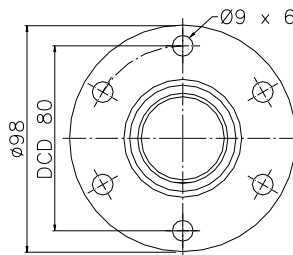
AV100D23-2
UHF-Connector



AV100BI23-2
Integrated BNC-Connector



Stainless steel M10 U-bolts are included as standard. M10 bolts for bulkhead mounting are not included.



Deck mount hole pattern

Mounting

To be mounted on a superstructure with UNS 1x14 base and support approx. 1.5' above the deck. Stand off support and base are not included.

To enable cable feed at the bottom of the antenna, an AV-C adaptor (included) can be used. See diagram above for detail.

September 2018

All specifications are subject to change without notice
The information contained herein is for reference only and does not constitute a warranty of performance

Partnered Supplier



sales@eylex.com.au
www.eylex.com.au

