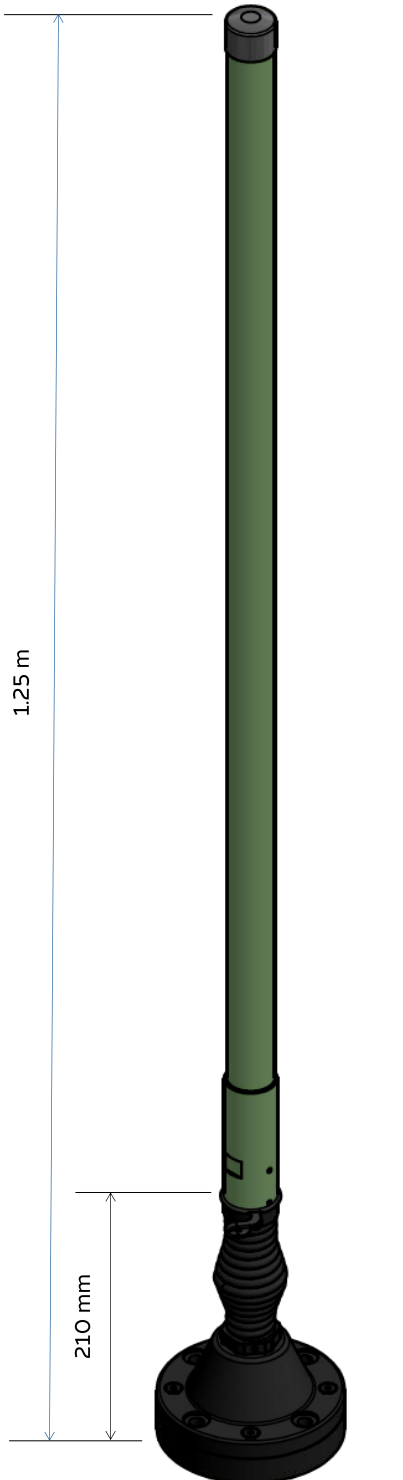


VHF100512VM Series

VHF/UHF vehicle whip, dipole, 1.25 m, 100-512 MHz

Tactical Antennas: Vehicle Mount



Spring Base (non GPS) shown
See page 2 for base options

Features

- Broadband
- Frequency 100 - 512 MHz
- Standard NATO pattern base options
- Designed for use on all modern in-service military platforms, including armoured or soft skin, metal chassis or composite, wheeled or tracked
- No tuning required
- Diplexer (2 connector) option for use with two transceivers
- High voltage protection option
- L1 and L1/L2 GPS Options

Electrical Specifications

| | |
|-------------------|-------------------------------|
| Frequency Range | 100-512 MHz |
| VSWR | ≤ 3.5 |
| Nominal Impedance | 50 ohm |
| Power Rating | 50 W +0.8 dB, 10 min |
| Gain | - 5.. 1.5 dBi, overleaf |
| Radiation Pattern | Azimuth: Omnidirectional |
| Polarisation | Vertical |
| Connector | BNC female, others on request |

Mechanical Specifications

| | |
|-------------------|--|
| Design | Broadband centre fed dipole. Radiating element completely enclosed in epoxy/fibreglass laminate. Metal parts are brass and stainless steel. |
| Length * | Total: 1.25 m Whip: 1.05 m Base: 0.23 m |
| Weight * | Total: 3.65 kg Whip: 1.4 kg Base: 2.25 kg |
| Wind Rating | 55 m/s = 201 km/h |
| Finish | Polyurethane lacquer, olive drab, other colours on request. |
| Temperature Range | - 55°C to + 71°C |
| Installation | Standard 4 hole NATO base with spring (see overleaf for base options) |

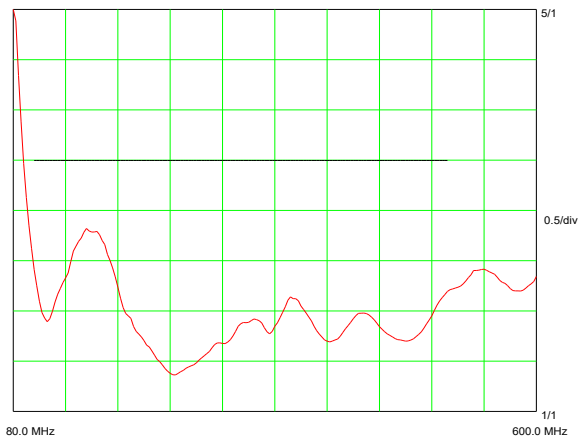
* Standard 4-hole spring base type A

GPS Electrical Specifications (option)

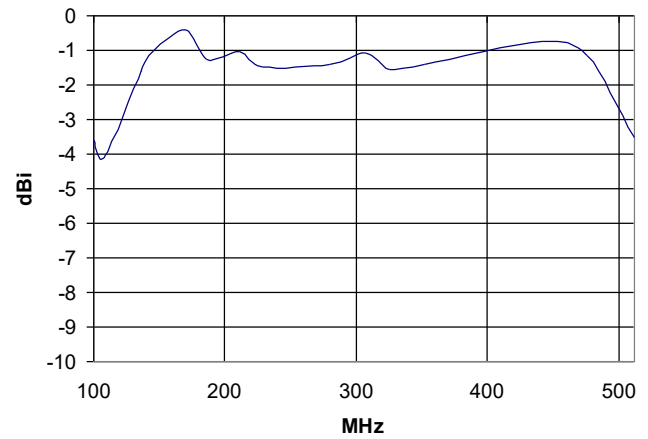
| Configuration | L1 GPS | L1/L2 GPS |
|----------------|------------------|--|
| Frequency Band | 1575.42 ± 10 MHz | L1 1575.42 ± 10 MHz L2 1227.60 ± 10 MHz |
| Supply Voltage | 2.7-5.5 V | 2.7-5.5 V |
| Pre-amplifier | 26.5 dB @ 5 V | 26.5 dB @ 5 V |
| Noise Figure | 2.5 dB | 2.5 dB |
| Supply Current | < 20 mA | < 42 mA |
| Polarisation | RHCP | RHCP |
| Connector | SMA female | SMA female |

VSWR and Gain Curves

VSWR



Gain



Antenna Base Options

Antenna bases are available to suit the user vehicle or shelter installation. Bases can be configured with the following options:-

1. L1 GPS
2. L1/L2 GPS
3. High voltage protection is available for selected bases



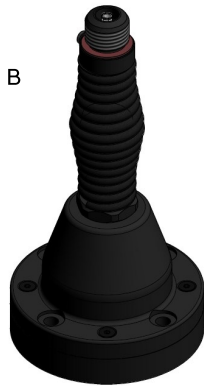
Standard CEF Connector
(connector between the whip and base)



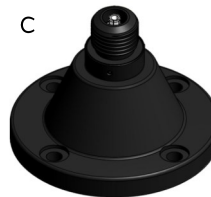
Optional VM Connector
(connector between the whip and base)



A
NATO 4-hole Spring
4 x M10 or 3/8" Bolts
on 114 mm PCD
Base diameter 140 mm
Base height 240 mm



B
NATO 4-hole Spring GPS
4 x M10 or 3/8" Bolts
on 114 mm PCD
Base diameter 140 mm
Base height 280 mm



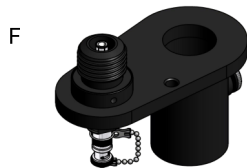
C
NATO 4-hole Rigid
4 x M10 or 3/8" Bolts
on 114 mm PCD
Base diameter 140 mm
Base height 125 mm



D
NATO
50 mm Thread
Base diameter 95 mm



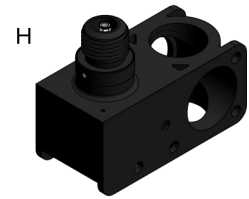
E
General Purpose
Bulkhead Adaptor
Mounting hole
diameter 22 mm



F
Mast Mount Brackets
40 mm Socket
50 mm Socket
Comrod AMX85 Mast
Customer Specified

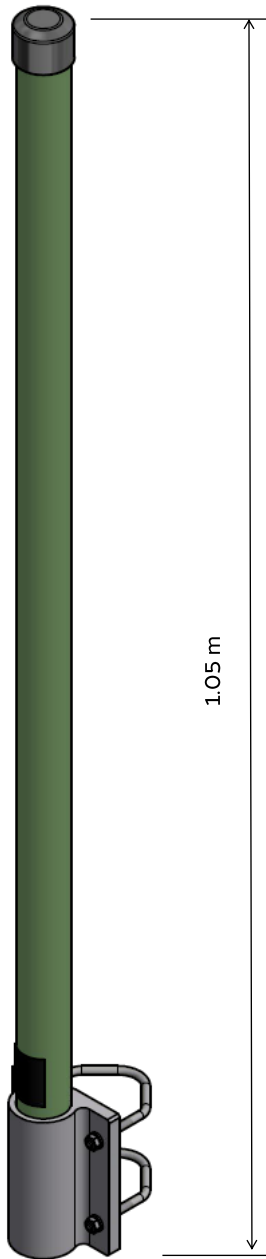


G
Mast Mount Brackets
24 mm Spigot
40 mm Spigot
50 mm Spigot
Customer Specified



H
AMX85 Mast Mount Bracket
To fit Comrod AMX85 mast
sections

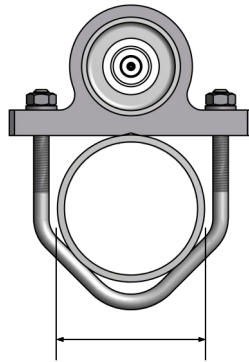
Antenna Variants



VHF100512M

A permanent mast mount version is also available.

Supplied with a fixed mounting plate and U-bolts. N type female or BNC female connector.



Mounting pole diameter
33-60 mm

March 2023

All specifications are subject to change without notice
The information contained herein is for reference only and does not constitute a warranty of performance

Partnered Supplier



sales@eylex.com.au
www.eylex.com.au

