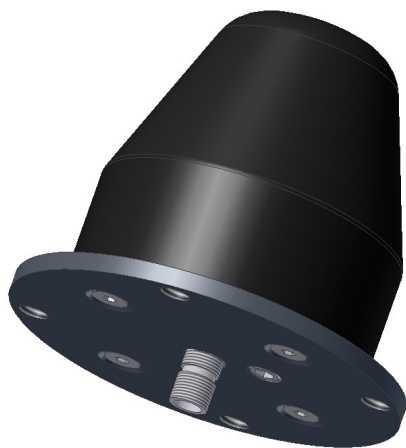
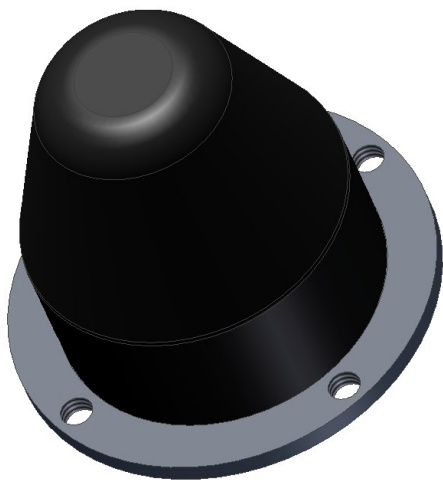


UHF2450LP

WLAN vehicle low profile antenna, 56 mm, 2400–2490 MHz

Tactical Antennas: Vehicle Mount



Description

Small antenna for WLAN.

All cavities are foam filled.

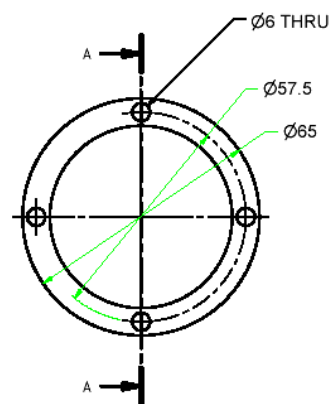
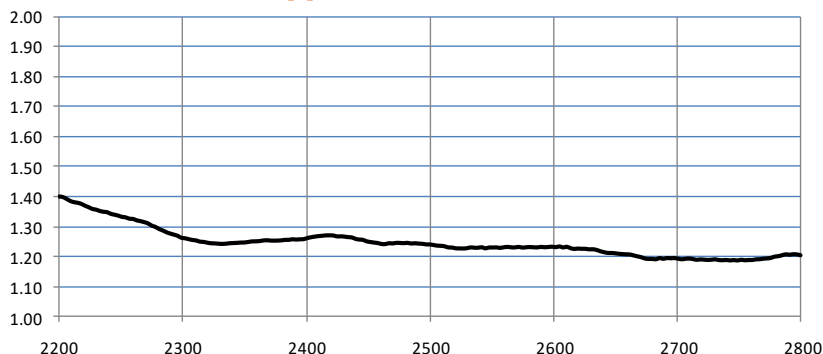
Electrical Specifications

| | |
|--------------------------|-----------------|
| Frequency Range | 2400–2490 MHz |
| VSWR | < 1.5 |
| Nominal Impedance | 50 Ω |
| Power Rating | 5 W |
| Gain | +2 dBi |
| Polarisation | Vertical |
| Radiation Pattern | Omnidirectional |
| Connector | SMA – female |

Mechanical Specifications

| | |
|--------------------------|--|
| Design | End feed dipole antenna |
| Dimensions | Height = 56 mm Diameter = \varnothing 65 mm |
| Weight | Approx. 95 g |
| Finish | Black |
| Temperature Range | – 55°C to + 71°C |

Typical VSWR Curve



September 2018

All specifications are subject to change without notice
The information contained herein is for reference only and does not constitute a warranty of performance

Partnered Supplier



sales@eylex.com.au
www.eylex.com.au