

EZPRR MFU

Enhanced Personal Role Radio Multiple Fill Unit

Radios: PPR



The Enhanced & Encrypted Personal Role Radio (EZPRR) provides AES128 encryption, enabling secure voice and data communications. To meet operational, training and support requirements, Selex ES has developed a modular, ruggedised and lightweight Multi-Fill Unit (MFU) capable of filling up to twelve EZPRR radios in a single operation.

The MFU builds on the experience gained with the company's family of Soldier Radios in the demanding operational environments to be found around the world. It is physically small, providing the benefits of reliability, robustness and the ability to survive in the operating environment. This reflects the key attribute common to all PRR family products, namely ease of use and limited demands on the operator.

The MFU includes a key erase function to enable swift clearing of the radios for operational reconfiguration or storage. It also provides a simple confidence test for correct operation of the radio.

The MFU design philosophy provides not only enhanced capability but also the flexibility to customise and enable future upgradeability through a modular architecture, without compromising its core performance.

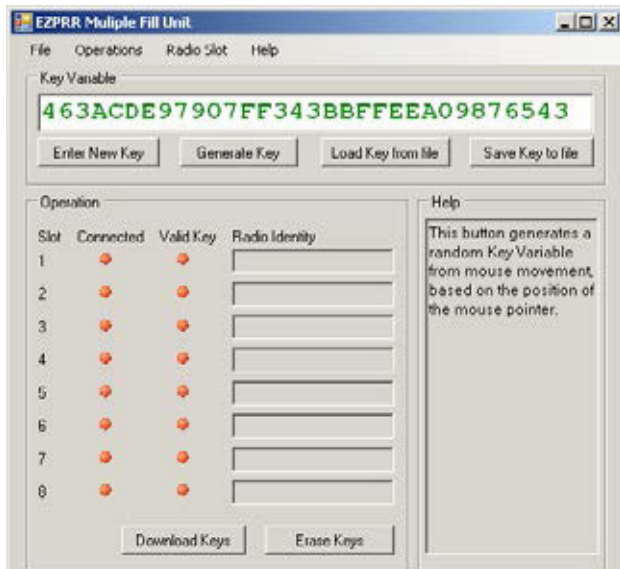
Operation is simple, requiring minimal training. Loading of encryption keys in to multiple radios and erasure of keys is implemented using a simple PC-based application. An LED-based human-machine interface and an integral selftest feature enable the user to quickly mount the radios. A connected PC runs the loading operation with an easy to use intuitive user interface.

Key Features

- Loads one to twelve EZPRRs
- Key Erase function
- Simple to use, intuitive user interface
- Self-test and confidence check features
- AC and DC compatible
- Tactical or base operation
- Modular architecture
- Upgradeable and expandable

Selex ES Soldier Radios are versatile and capable of addressing multiple operational environments. Current users vary from high-intensity close combat infantry, through coalition peace-keeping/ peace support operations, to specialist forces and armed gendarmerie. Environments have included desert, jungle, urban, rural, vehicle and helicopter-borne operations.

The ability to sustain radio operations is essential in the modern fast moving and complex dismounted environment. The ability to maintain operational and training tempo demands a robust, deployable means of loading encryption keys. The Selex ES MFU provides exactly that capability.



Technical Specifications

Encryption Load Time for one-eight radios	Under 20 seconds
Operating Temperature Range	- 10°C to + 50°C (matching current battery specifications)
Storage Temperature Range	- 40°C to + 70°C
Size (for eight radio unit) <ul style="list-style-type: none"> • Width • Depth • Height 	145 mm 36 mm 175 mm
Weight	6.5 kg

September 2018

All specifications are subject to change without notice

The information contained herein is for reference only and does not constitute a warranty of performance

Partnered Supplier



sales@eylex.com.au
www.eylex.com.au

